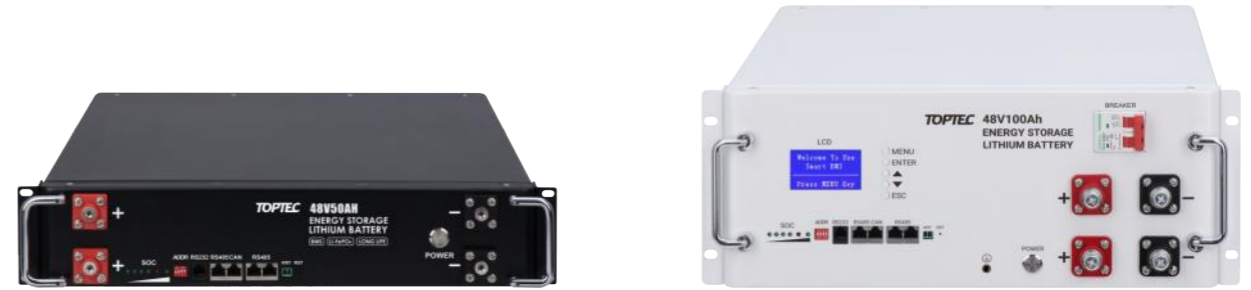


# DKC Series

## Rack/Cabinet Energy Storage Lithium Battery



### Technical Parameters

Model	DKC4850		DKC48100		DKC48200	
Specification	48V50Ah	51.2V50Ah	48V100Ah	51.2V100Ah	48V200Ah	51.2V200Ah
Combination	15S1P	16S1P	15S1P	16S1P	15S1P	16S1P
Capacity	2.4KWh	2.56KWh	4.8KWh	5.12KWh	9.6KWh	10.24KWh
Standard discharge current	50A	50A	50A	50A	50A	50A
Max. discharge current	100A	100A	100A	100A	100A	100A
Working voltage range	40.5-54VDC	43.2-57.6VDC	40.5-54VDC	43.2-57.6VDC	40.5-54VDC	43.2-57.6VDC
Standard Voltage	48VDC	51.2VDC	48VDC	51.2VDC	48VDC	51.2VDC
Max. charging current	50A	50A	50A	50A	100A	100A
Max. charging voltage	54V	57.6V	54V	57.6V	54V	57.6V
Cycle	3000~6000cycles @DOD 80%/25°C/0.5C					
Working humidity	65±20%RH					
Operating temperature	-10~+50°C					
Working altitude	≤2500m					
Cooling method	Natural cooling					
Installation	Cabinet/Rack Mount					
Protection level	IP20					
Max of parallel	15PCS					
Warranty	5~10 Years					
Communication	Default: RS485/RS232/CAN Optional: WiFi/4G/Bluetooth					
Certified	CE ROHS FCC UN38.3 MSDS					
Product Size	440*484*88mm		440*484*178mm		440*796*178mm	
Package Size	500*555*130mm		555*500*235mm		570*1010*365mm	
Net weight	25kg	37kg	41kg	45kg	101kg	105kg
Gross weight	30kg	42kg	49kg	55kg	111kg	115kg

\*Voltage, capacity, size/color customization, OEM/ODM services can be provided according to customer needs

